



Main features:

- Measurement of nozzle touch force (nozzle pressure force) in injection-molding and die-casting machines
- User-friendly, small and compact
- Force measurement range: 200kN / 450kN
- Very high repeatability
- Direct connection to our signal amplifiers and monitors
- Various nozzle adapters can be retrofitted (e.g., brass)
- Magnetic bases can be retrofitted in different sizes

Modern fully electronic injection molding machines have to be tested regularly the nozzle touch force. This applies, in particular, to ISO 9000 quality assurance.

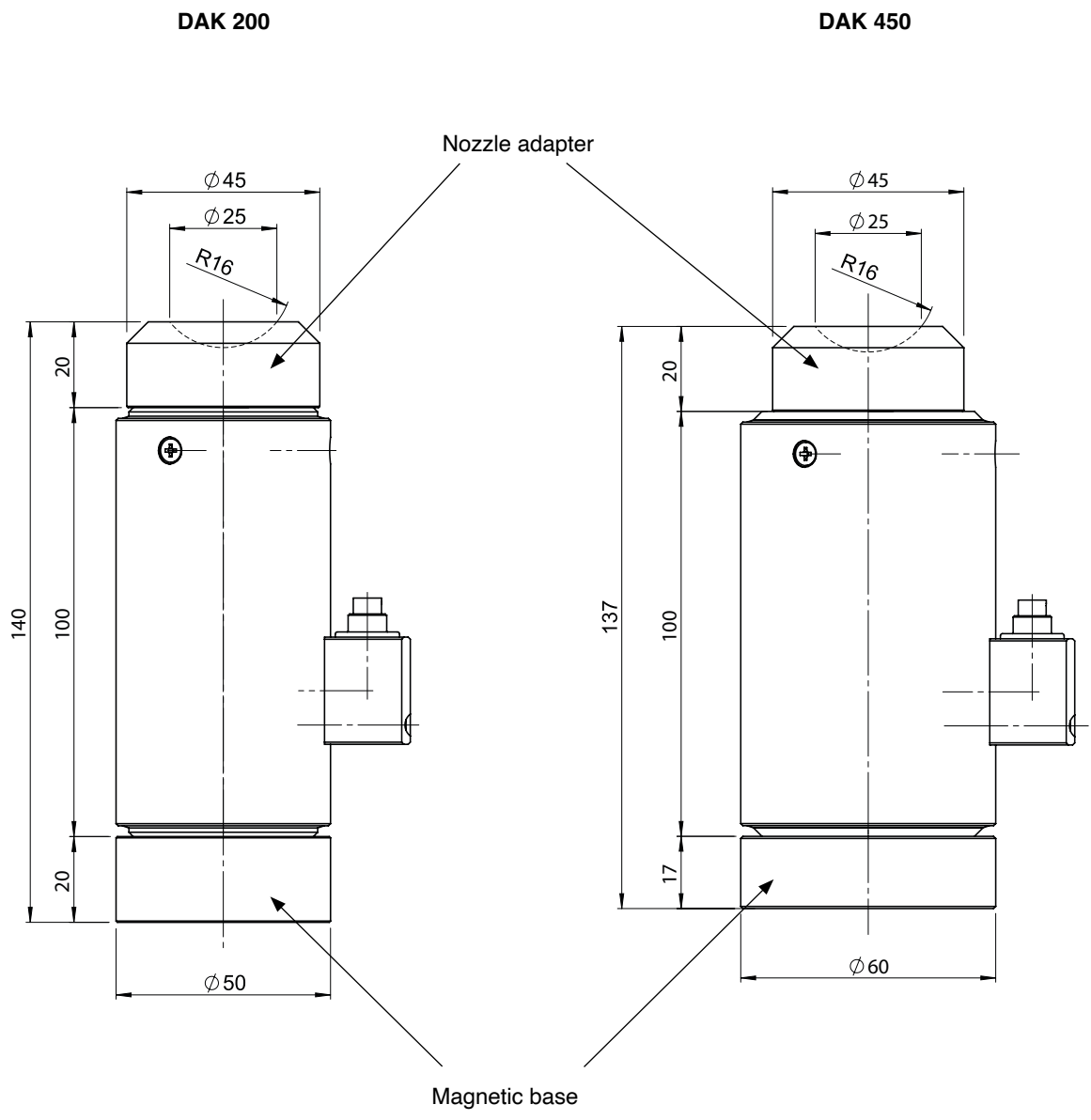
The nozzle touch force sensor DAK measure the nozzle touch force (nozzle pressure force) in injection-molding and die-casting machines reliably and reproducibly. Simply place the DAK with the magnetic base onto the mold, connect it to our existing monitor and move the nozzle on to the sensor. Then it can be measured immediately. The sensor is made of hardened and tempered steel (corrosion-protected) and is therefore very solid and durable.

When using the DU-1D, DU-4D or DU-4USB monitors, make sure that the diameter of the sensor body is set on the monitor. Only a properly adjusted diameter shows the measured force correctly in „kN“ and „t“.

TECHNICAL DATA

Strain gauge type		Foil (GF = 2.0)
Bridge resistance		350Ω
Measuring range		200/450 kN
Output signal 2/4 bridge	200 kN / 450 KN	1358 µε
Output signal 4/4 bridge	200 kN / 450 KN	1.7 mV/V
Sensitivity tolerance		± 0.2%
Transverse sensitivity		0.9 ± 0.2%
Accuracy		< ± 0.2% FS
Linearity		< ± 0.2% FS
Hysteresis		< ± 0.1% FS
Repeatability		< ± 0.1% FS
Supply voltage		5VDC (max 8VDC)
Supply current		< 15mA
Operating temperatur range		-30...+50°C
Storage temperatur range		-30...+50°C
Overload capability		150% FS
Protection class		IP67
Sensor material		Hardened and tempered steel corrosion-protected
Cover material		Anodized aluminium
Weight, including cable		2.5kg

DIMENSION

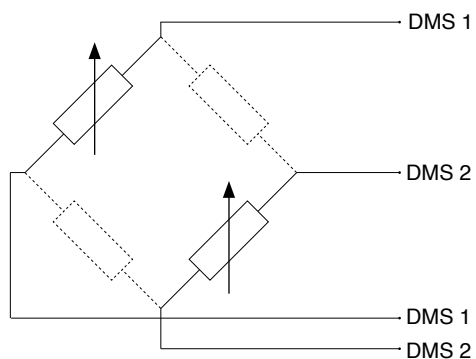


Monitor settings (DU-1D / DU-4D / DU-4USB)	
Sensor version	Sensor body diameter
DAK 200	$\varnothing 30\text{mm}$
DAK 450	$\varnothing 45\text{mm}$

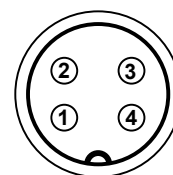
Dimension in mm

ELECTRICAL CONNECTIONS

2/4 bridge version

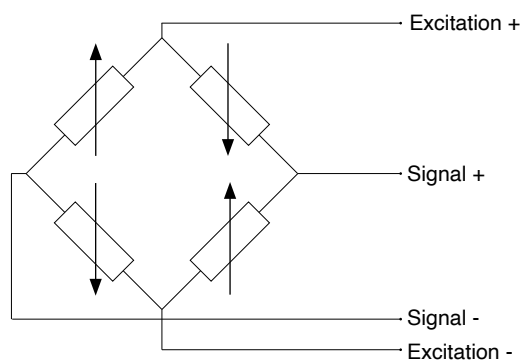


Connector PIN	Function
1	DMS 1
2	DMS 1
3	DMS 2
4	DMS 2

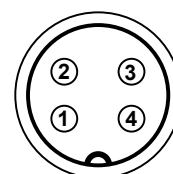


M9 4-pin

4/4 bridge version



Connector PIN	Function
1	Excitation +
2	Excitation -
3	Signal -
4	Signal +



M9 4-pin

ORDER CODE

Nozzle touch force sensor

DAK - -

Measuring range	
200 kN	200
450 kN	450

Bridge	
2/4 bridge	2
4/4 bridge	4

Example: DAK - 200 - 2

Nozzle touch force sensor DAK, measuring range = 200 kN, 2/4 bridge

ACCESSORIES

Description		Order code	Code
Cable for 2/4 bridge version	3 m	C - 712W - 030 - 680 - 2	F069666
	5 m	C - 712W - 050 - 680 - 2	F069695
	10 m	C - 712W - 100 - 680 - 2	F069696
Cable for 4/4 bridge version	3 m	C - 712W - 030 - 680 - 4	F063406
	5 m	C - 712W - 050 - 680 - 4	F067954
	10 m	C - 712W - 100 - 680 - 4	F069697
Nozzle adapter		NA - 1	F069650
Magnetic base	Ø 50mm	MA - 1	F069050
	Ø 60mm	IN - 0000 - O - 000 - S - O - O	F068444
VDA - Amplifier		see separately data sheet for ordering information	
DU - Monitor		see separately data sheet for ordering information	

GEFRAN spa reserves the right to make any kind of design or functional modification at any moment without prior notice.

Sensormate AG

Steigweg 8, - CH-8355 Aadorf, Switzerland
ph: +41(0)52-2421818 - fax: +41(0)52-3661884
Internet: <http://www.sensormate.ch>

GEFRAN spa

via Sebina, 74 - 25050 PROVAGLIO D'ISEO (BS) - ITALY
ph. +39 030 9888.1 - fax. +39 030 9839063
Internet: <http://www.gefran.com>

GEFRAN

DTS_DAK_06-2024_ENG